

AEDES CAMPUS

Berlin-Prenzlauer Berg

AEDES CAMPUS



ABOUT

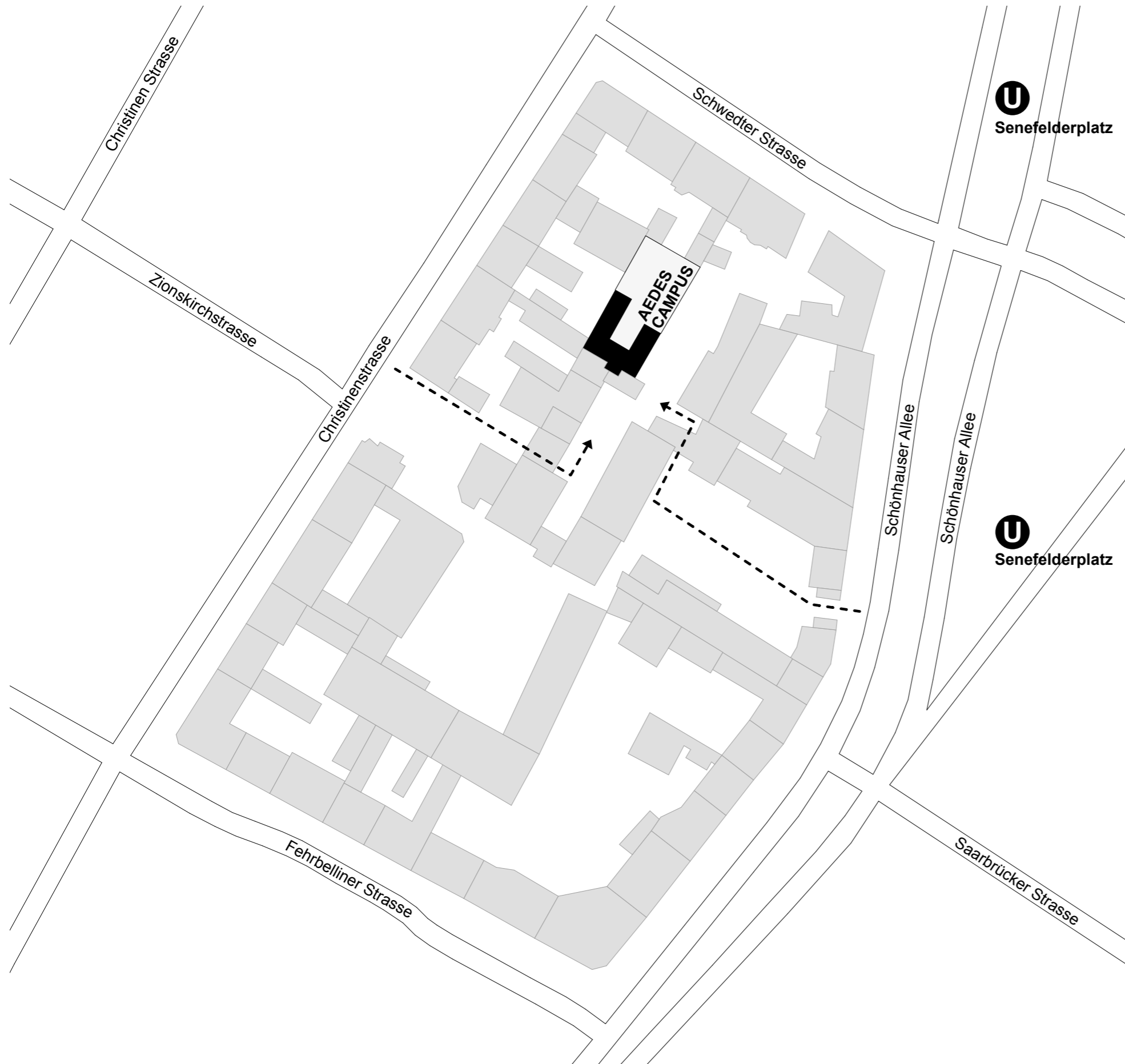
The Aedes Campus is a multifunctional space that inspires creative exchange. It is part of Aedes Architecture Forum and is located in the heart of Berlin at Pfefferberg in Prenzlauer Berg.

Our beautiful and dynamic 200 m² event space and the adjacent idyllic garden can be rented for both private and public events of various formats.

Café Aedes is happy to offer gastronomic services. With its Italian charm, it is a place to meet, exchange ideas, chat, have a drink and a laugh. Catering for breakfast, lunch and dinner is available.

In our quiet and cosy Aedes apartments, you can relax after exploring Berlin or accommodate guests of your event.

LOCATION



Aedes Network Campus Berlin gGmbH

Christinenstr. 18-19

10119 Berlin | Germany

+49 30 2827015

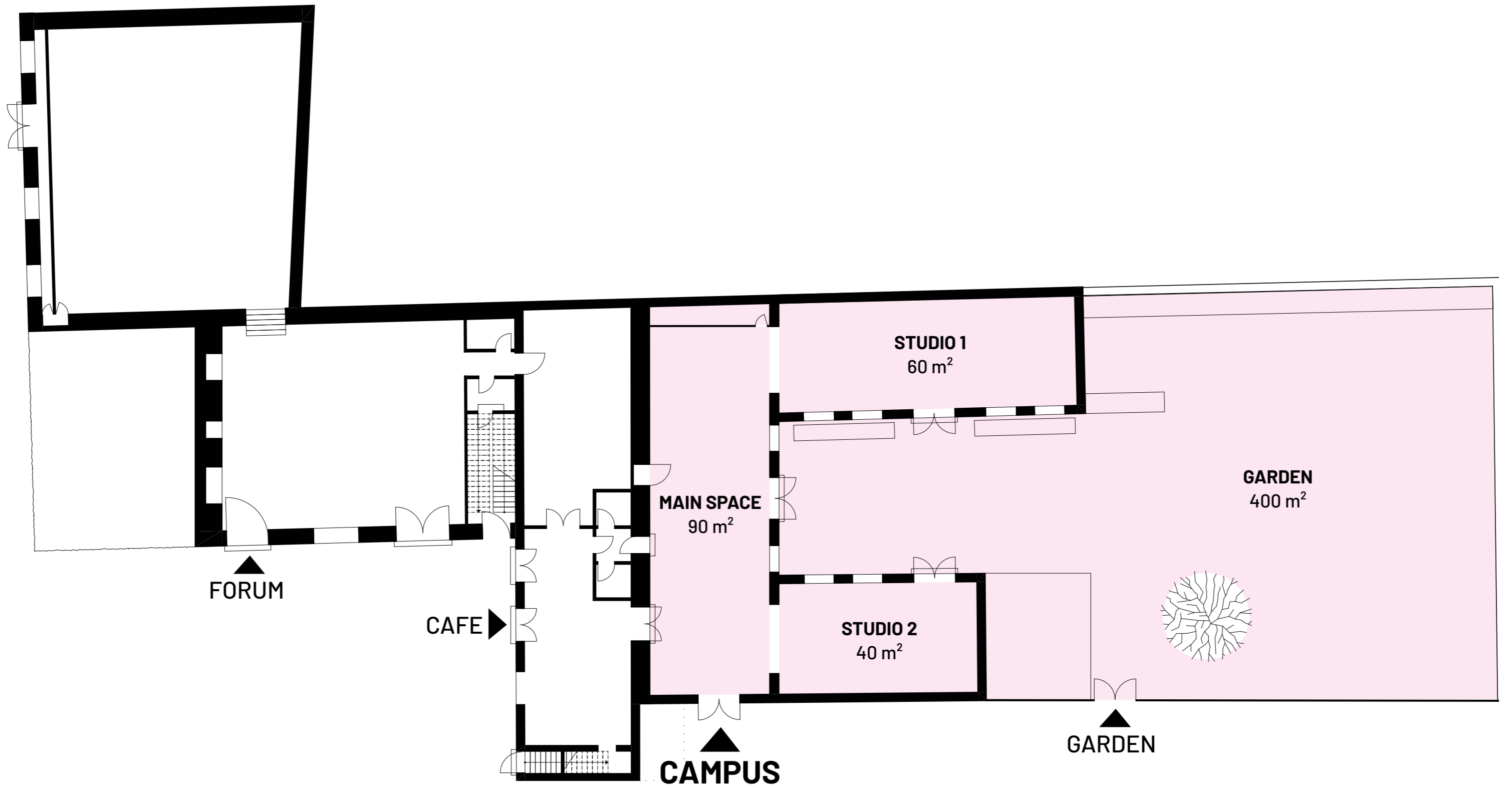
aedes@aedes.global

aedesmetrolab.de/facilities

DIRECTIONS

MAPS [Go to Maps](#)

VENUE



VENUE

CAPACITY

Row seating 120 pp

Table seating 55 pp

EQUIPMENT

Kitchen fully equipped

Bathroom 2 toilets, unisex

Wifi

Tables 20 pcs

Chairs 120 pcs

Projectors 4 pcs

Plotter up to A0

Printer and Scanner up to A3

Whiteboards 3 pcs

Audio Sound System + Microphone

Beer tables and benches 10 pcs

Standing tables 8 pcs

Tents 10 pcs



FORMATS

- Workshops
- Talks
- Conferences
- Supper Clubs
- Tastings
- Trainings
- Exhibitions
- Shootings
- Showroom
- Parties
- and many more...



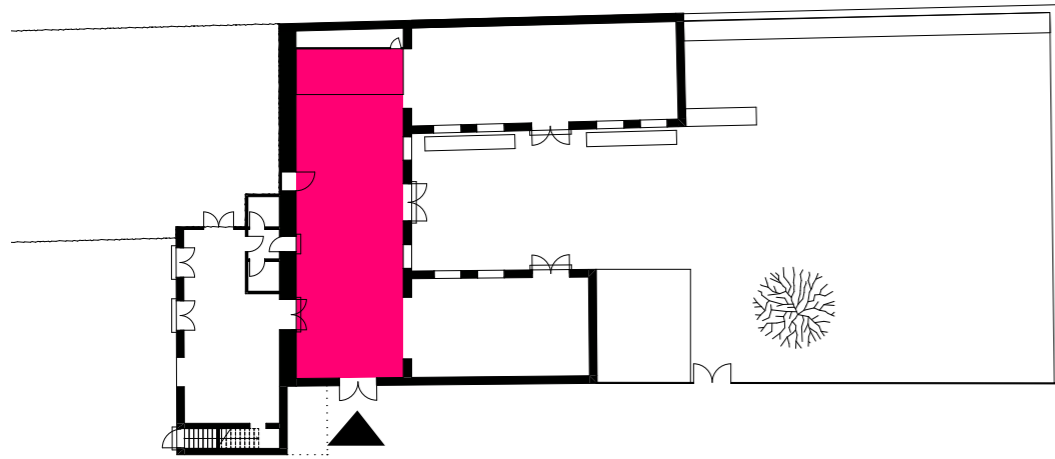
MAIN SPACE



MAIN SPACE



MAIN SPACE



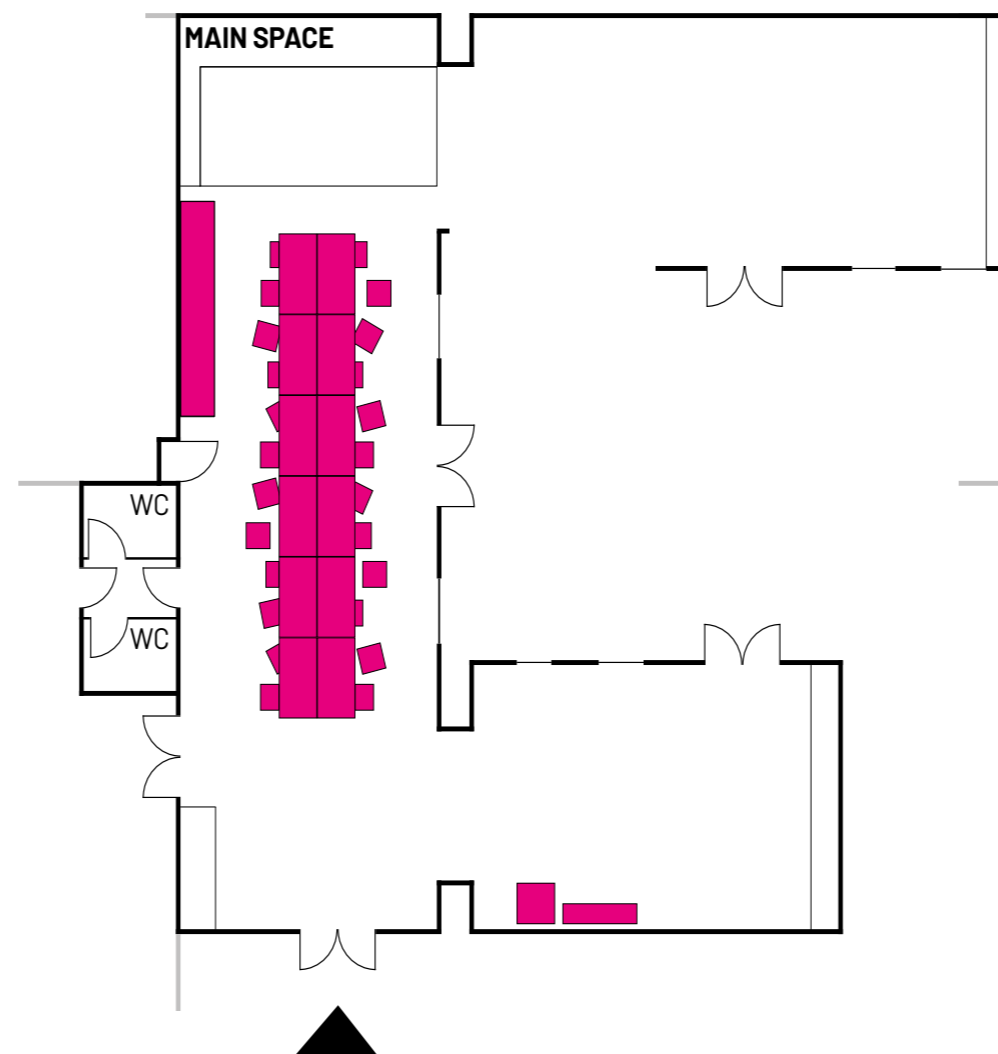
FACTS

Size 90 m²
Row seating 80 pp (120 pp with Studio 1)
Table seating 25 pp

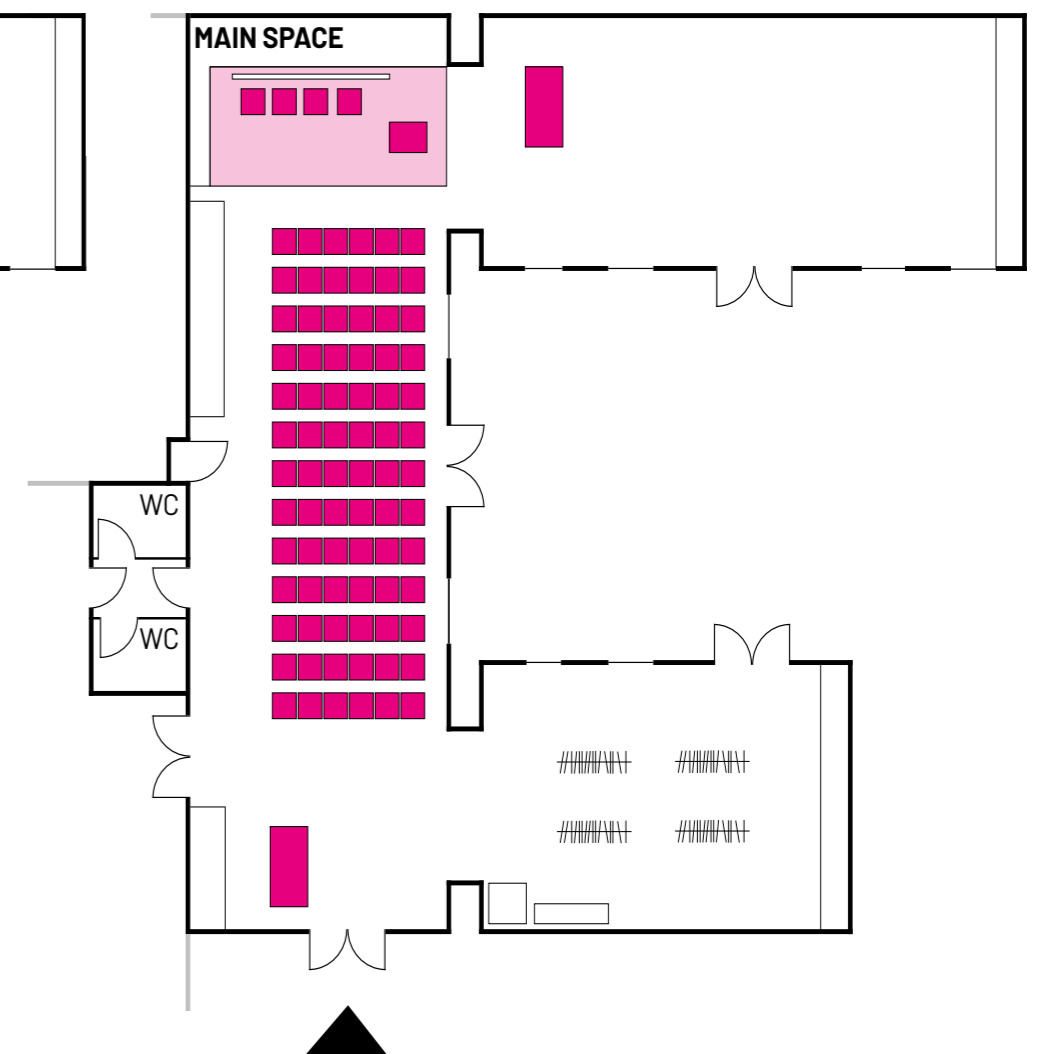
EQUIPMENT

Kitchen fully equipped
Bathroom 2 toilets, unisex
Wifi
Tables 20 pcs
Chairs 120 pcs
Projectors 2 pcs
Plotter up to A0
Printer and Scanner up to A3
Whiteboards 3 pcs
Audio Sound System + Microphone
Beer tables and benches 10 pcs
Standing tables 8 pcs
Tents 10 pcs

WORKSHOP



CONFERENCE



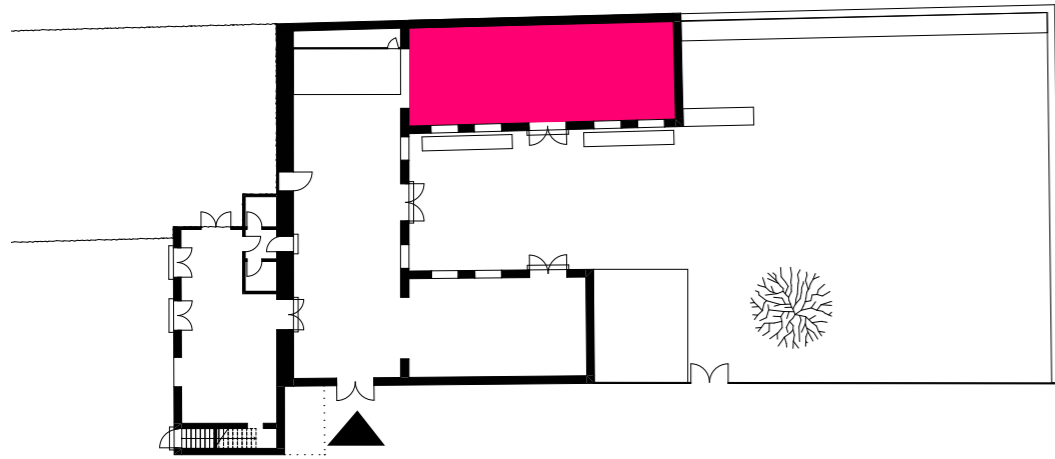
STUDIO 1



STUDIO 1



STUDIO 1



WORKSHOP



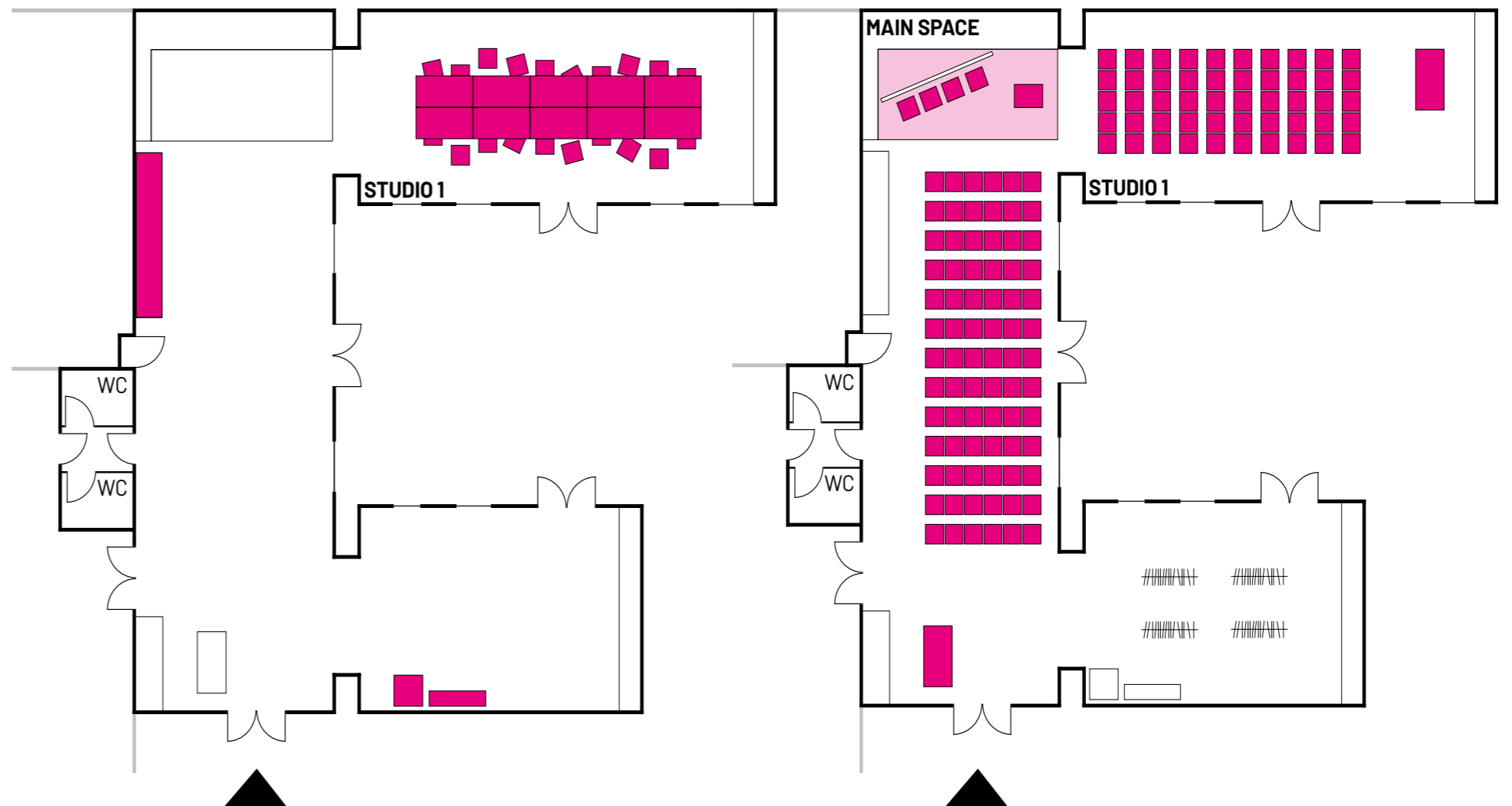
CONFERENCE

FACTS

Size 60 m²
Row seating 120 pp (with the Main Space)
Table seating 20 pp

EQUIPMENT

Kitchen fully equipped
Bathroom 2 toilets, unisex
Wifi
Tables 20 pcs
Chairs 120 pcs
Projectors 1 pc
Plotter up to A0
Printer and Scanner up to A3
Whiteboards 3 pcs
Audio Sound System + Microphone
Beer tables and benches 10 pcs
Standing tables 8 pcs
Tents 10 pcs



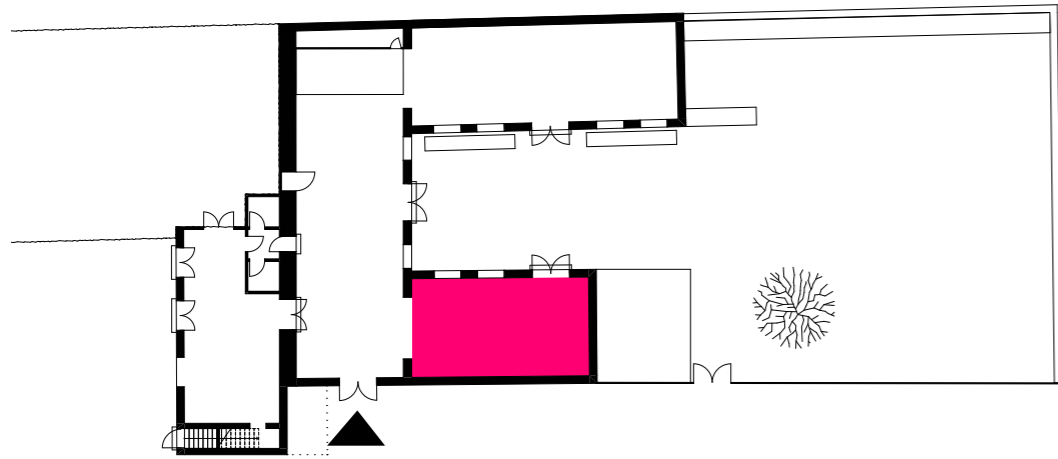
STUDIO 2



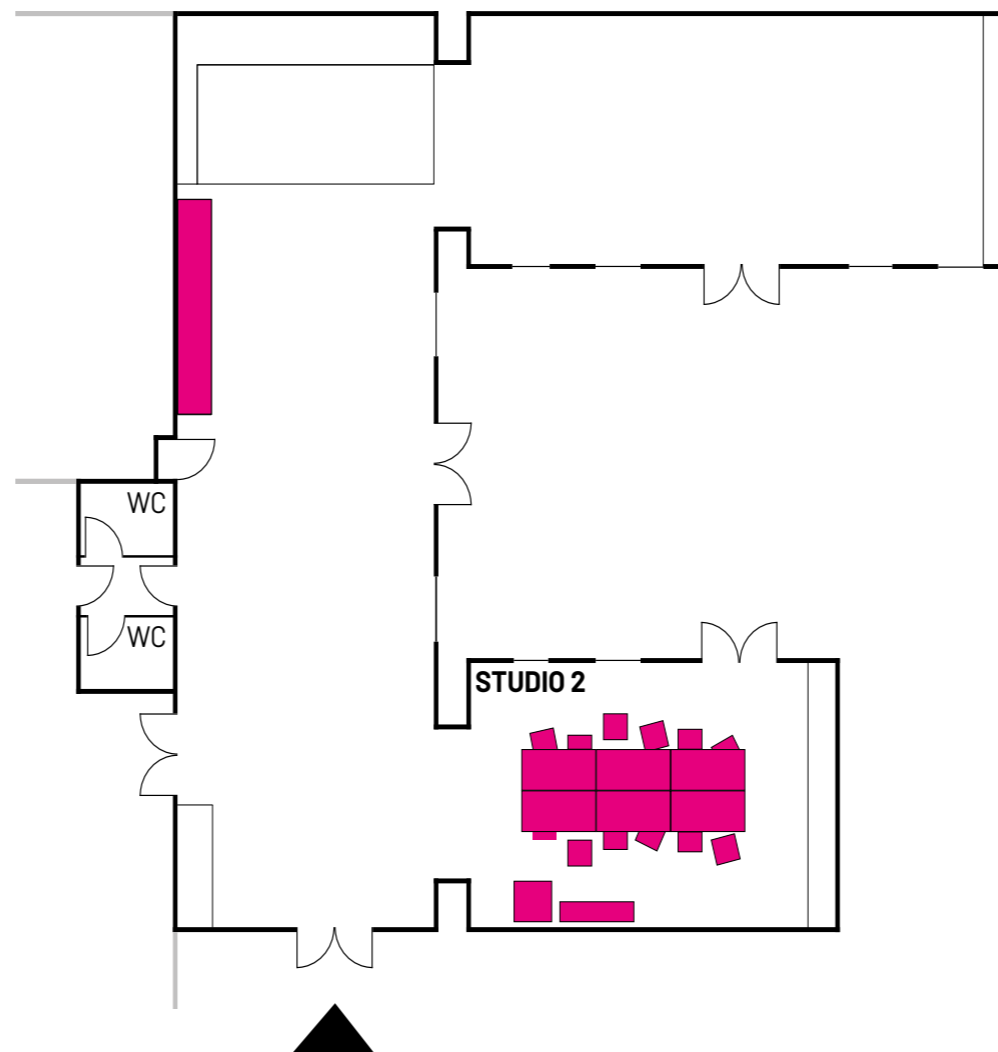
STUDIO 2



STUDIO 2



WORKSHOP



FACTS

Size 40 m²

Table seating 12 pp

EQUIPMENT

Kitchen fully equipped

Bathroom 2 toilets, unisex

Wifi

Tables 20 pcs

Chairs 120 pcs

Projectors 1 pc

Plotter up to A0

Printer and Scanner up to A3

Whiteboards 3 pcs

Audio Sound System + Microphone

Beer tables and benches 10 pcs

Standing tables 8 pcs

Tents 10 pcs

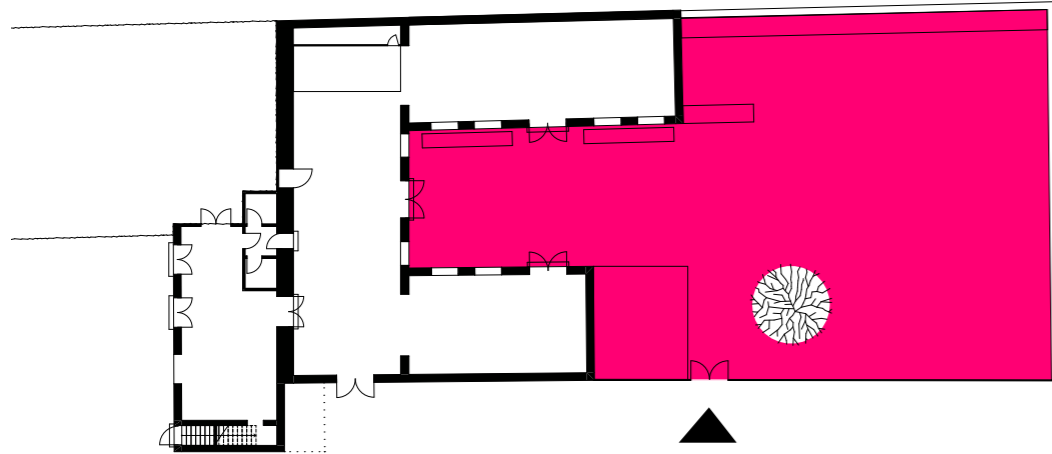
GARDEN



GARDEN



GARDEN



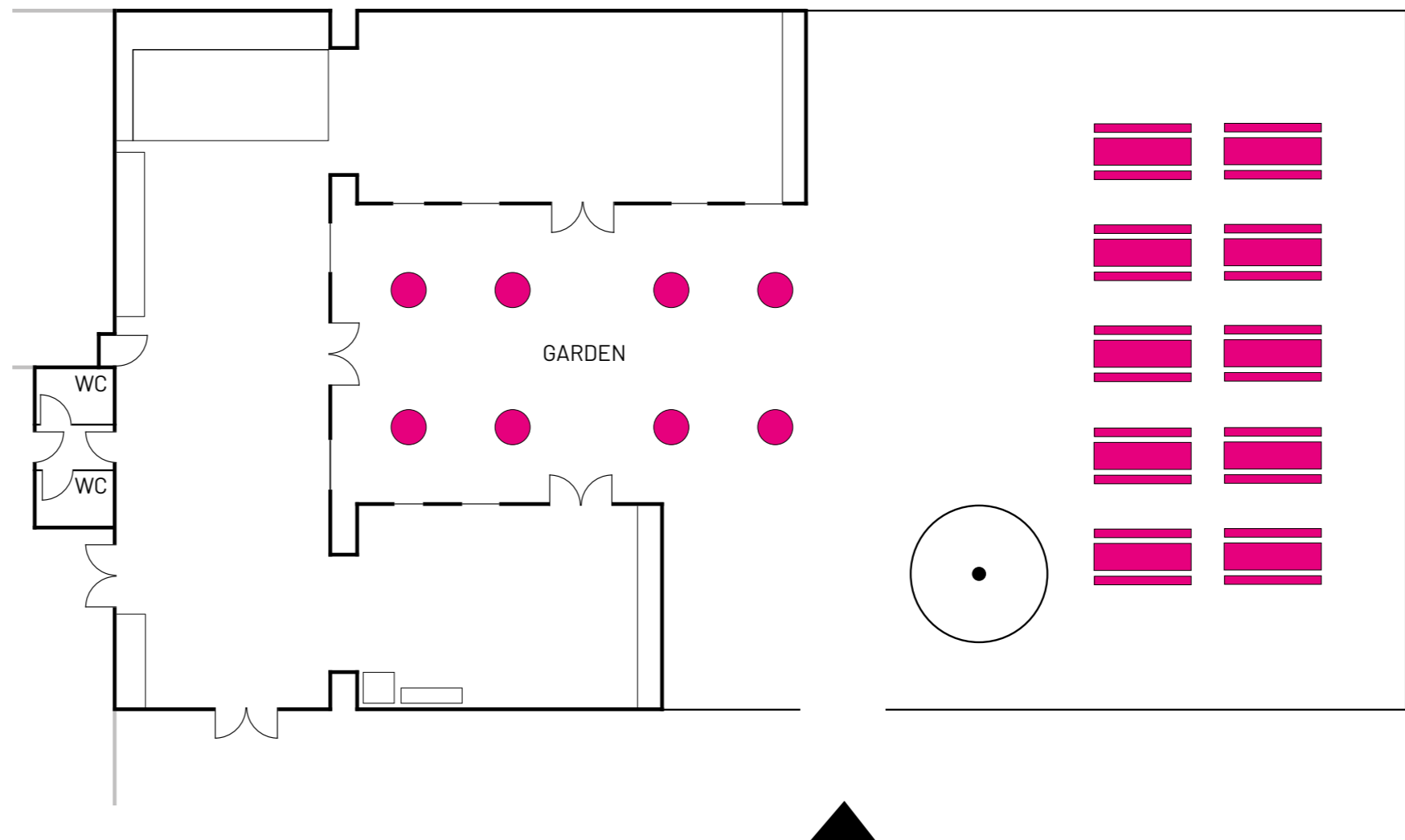
FACTS

Size 400 m²
Seated 120 pp
Open until 22:00

EQUIPMENT

Kitchen fully equipped
BBQ in combination with catering
Bathroom 2 toilets, unisex
Beer tables and benches 10 pcs
Standing tables 8 pcs
Tents 10 pcs

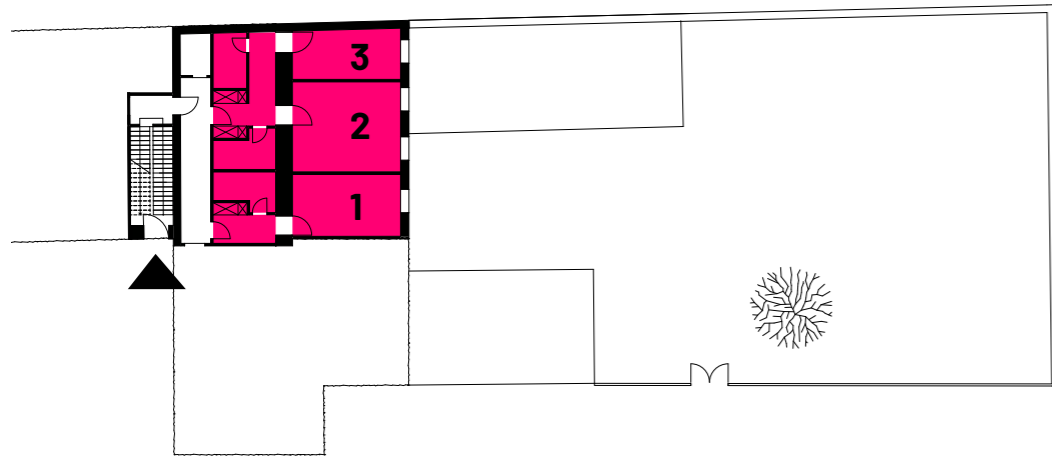
GET-TOGETHER



ACCOMMODATION



APARTMENTS



FACTS

Apartment 1: 2 beds, bathroom, 25m²

Apartment 2: 2 beds, bathroom, 30m²

Apartment 3: 2 beds, bathroom, 20m²

INFO AND BOOKING

Airbnb [airbnb.de/users/show/420353177](https://www.airbnb.de/users/show/420353177)



CONTACT

Aedes Network Campus Berlin gGmbH

Christinenstr. 18-19

10119 Berlin | Germany

+49 30 2827015

aedes@aedes.global

aedesmetrolab.de/facilities

PHOTO CREDITS

7 © Liz Eve

10 © HOWOGE

27 © Marco van Oel

19 © Orhan Kolukisa

8, 17, 25, 30 © Aedes

24 © Zeit-Stiftung/ David Ausserhofer

1-6, 9, 11-14, 16, 18, 20-23, 26, 28-29, 1-44 © Erik-Jan Ouwerkerk

